



**powerblanket™**  
patented technology

# CONCRETE CURING



## Revolutionary New Heat Spreading Technology

- Thaws Faster
- Cures Harder
- Heats Evenly

### HEATING INNOVATION:

Flatwork Technology's patented powerblanket™ brand of electrically heated exterior blankets are the ideal heat solution for ground thaw, concrete cure and most cold weather construction needs.

The powerblanket™ is the revolutionary heating blanket. With our patented heat spreading technology, it is finally possible to achieve an even, consistent directional heat. Using only 120V or 12V, it's the most efficient and energy saving solution on the market today. The powerblanket™ is lightweight and durable, requiring virtually no maintenance, saving time, money & labor.



### CONCRETE CURING:

Powerblanket™ provides the ideal environment for most concrete curing applications. It's innovative directional heat design spreads heat evenly across the surface, maintaining the optimal cure temperatures of 60-70 degrees.

**POWERBLANKET™ ADDS AND MAINTAINS HEAT THROUGHOUT THE ENTIRE CURING PROCESS REDUCING CURE TIME.**

Achieve recommended psi strength earlier than conventional methods.  
**18 MILL RIP STOP VINYL**

Durable, UV protected and tear resistant.

Holds up in extreme cold conditions (down to -20 F)

**MAINTAINS MOISTURE IN THE CONCRETE**

Prevents rapid drying, which helps to reduce cracking.

**LIGHTWEIGHT**

Easy for one person to transport and set up.

No heavy machinery required.

**120 VOLT**

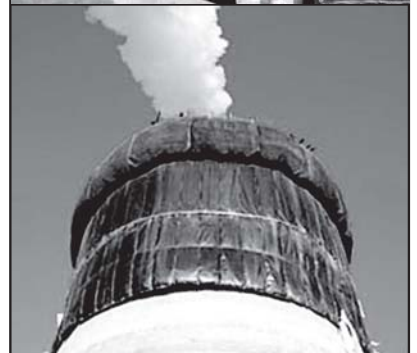
Low energy consumption compared to conventional heating methods.

240 Volt single phase units available upon request.

Plug multiple blankets together on the same circuit.

**WATER RESISTANT**

**REDUCES STAINING OR DISCOLORING OF CONCRETE**



**For More Information  
Call Toll Free:  
(877) 927-6432**

Distributed By:

**FLATWORK**  
TECHNOLOGIES

1997 South 5070 West

Salt Lake City, Utah 84104

[www.flatwork.com](http://www.flatwork.com)



Our products are designed to help contractors meet ACI Standards (ACI 306) for cold weather construction.

## CONCRETE CURING BLANKET:

- 23X11 CURING BLANKET**  
 Maintains concrete curing temperatures of 60°-70°F in cold weather. 253 sq. ft. of coverage.
- 25X6 CURING BLANKET**  
 Maintains concrete curing temperatures of 60°-70°F in cold weather . 150 sq. ft. of coverage.

## MULTI-DUTY BLANKET:

- 23X11 MULTI-DUTY BLANKET**  
 Cure concrete, thaw frozen ground, melt snow and ice, prepare construction sites prior to pouring concrete.
- 25X6 MULTI-DUTY BLANKET**  
 Cure concrete, thaw frozen ground, prepare construction sites for pouring concrete and cure foundation walls. Versatile for multiple applications.
- 10X10 MULTI-DUTY BLANKET**  
 Lightweight used for curing foundations and walls. Thaw frozen ground, heat sand and aggregate.
- 3X25 MULTI-DUTY BLANKET**  
 Cure concrete and thaw frozen ground. Designed for footings, sidewalks, curb & gutter and other odd sized jobs.

Product Category	Model #	Size in Feet	Voltage	Wattage	Amps	# of Blankets per 20amp Circuit
CONCRETE CURING	CC1123	11'X23'	120V	1,197	9.98	2
	CC0625	6'X25'	120V	1,140	9.50	2
MULTI-DUTY	MD1123	11'X23'	120V	2,400	20.00	1
	MD0625	6'X25'	120V	1,200	10.00	2
	MD1010	10'X10'	120V	1,200	10.00	2
	MD0325	3'X25'	120V	1,140	9.50	2
	MD0404-12V	4'X4'	12V	240	20	N/A
	MD0202-12V	2'X2'	12V	96	8	N/A

Recommended 12 or 10 gauge extension cords.  
 Maximum recommended length: 50 ft. 12 gauge and 100 ft. for 10 gauge.

Flatwork Technology guarantees it's products to be free from defect in material or craftsmanship. Please call 1.877.927.6432 for additional product information and pricing.

Distributed By:  
**FLATWORK**  
 TECHNOLOGIES

To order powerblanket™ products:

P: 1.877.927.6432

[www.flatwork.com](http://www.flatwork.com)